

# Entry Form

Name: \_\_\_\_\_

Address: \_\_\_\_\_

Company: \_\_\_\_\_

City: \_\_\_\_\_

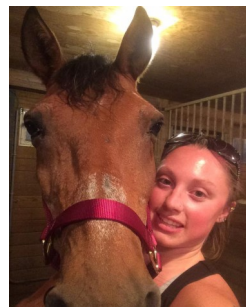
Phone: \_\_\_\_\_

State: \_\_\_\_\_ ZIP: \_\_\_\_\_

Email: \_\_\_\_\_

For Questions or Comments:  
 Kris Mill - 610-703-9812  
 Herb Frye - 610-751-0206  
 E-mail: MLFMemorialFoundation@gmail.com  
 Website: www.mlffoundation.org

## Merissa L. Frye Small Cell Cervical Cancer Memorial Foundation



The Merissa L. Frye Small Cell Cervical Cancer Memorial Foundation was founded with the mission of improving outcomes in the community and of cancer diagnoses.

These past years have shown great potential for our organization through the success of our previous fundraising efforts and prior golf scrambles. From our prior golf events the MLF Foundation was able to generate over \$105,000 in donations to the Macungie Ambulance Corps, St. Lukes, LVHN, and the Emmaus High School IEP projects.

Please join us in Taking A Swing at Women's Cancer!  
The Merissa L. Frye Small Cell Cervical Cancer Memorial Foundation is a 501(c)(3) nonprofit organization

### Guest Speakers



**Richard M. Boulay, M.D.**  
 Board-certified, fellowship-trained gynecologic oncologist with more than 25 years' experience.



**Christopher Greb**  
 Macungie Ambulance Corps Operations Manager. 20+ years in EMS



**Mary-Kate Cellmer, MBA**  
 St. Luke's VP of Oncology Service Line



**Kelly McCready**  
 LVHN Director of Community Giving



Merissa L. Frye  
 Small Cell Cervical Cancer  
 Memorial Foundation

## 6th Annual Charity Golf Scramble & Luncheon



**MACUNGIE**  
 AMBULANCE CORPS

**St Luke's**  
 UNIVERSITY HEALTH NETWORK

**Lehigh Valley**  
 Health Network

**TAKING A SWING AT  
 WOMEN'S CANCER**

**September 20th 2025**

**8:00AM Shotgun Start**

**Butter Valley Golf Course - Barto, PA**

Mail completed form with payment to:  
 Merissa L. Frye Small Cell Cervical Cancer Memorial Foundation  
 c/o Herb Frye  
 6508 Vera Cruz Rd S  
 Zionsville, PA 18092

Checks made payable to:  
 Merissa L. Frye Small Cell Cervical Cancer Memorial Foundation

All payments and entry forms must be received by  
**SEPTEMBER 15, 2025**

**The Merissa L. Frye Small Cell  
Cervical Cancer Memorial  
Foundation is proud to  
announce...**

**Our 6th annual charity  
golf scramble!**

Proceeds will benefit St. Luke's cervical  
cancer research, the Macungie Ambulance  
Corps., LVHN Hemophilia Treatment  
Center, & Emmaus HS IEP

Saturday September 20th, 2025

Registration: 7:00 AM

Shotgun Start: 8:00 AM

Lunch/Awards and Prizes 12:30 PM

Butter Valley Golf Course  
3243 Gehman Road  
Barto PA  
610.845.2491

**Prizes Awarded**

Top Teams  
Longest Drive  
Straightest Drive  
Closest to the Pin  
50/50 & Basket Raffles

**Entry Fees:**

\$120 per person or \$480 per foursome

Includes:

- ◇ Cart & Greens Fees
- ◇ Golfer Appreciation Bag
- ◇ Breakfast items/Catered Lunch
- ◇ Entrance into Skills Games

Mulligans, Putt Strings, and Pot of Gold  
are available for purchase

A lunch only option is available for those  
that do not golf but want contribute! - \$20

**Golf Sponsorships:**

Platinum - \$1500

- ◇ 3 - Foursome Scramble Entries
- ◇ 3 - Signs on Premium Holes

Gold - \$1100

- ◇ 2 - Foursome Scramble Entries
- ◇ 2 - Signs on a hole

Silver - \$525

- ◇ 1 - Foursome Scramble Entry
- ◇ Signage on a hole

**Non-Golfing Sponsorships:**

Bronze - \$100

- ◇ Signage on a hole

Hot Dog Cart Sponsor - \$150

- ◇ Signage at Hot Dog station on turn

Beverage Sponsor - \$200

- ◇ Signage at beverage station

Lunch Sponsor - \$500

- ◇ Banner at luncheon

Cart Sponsor - \$500

- ◇ Branding on each cart

Overall Event Sponsor - \$2000

- ◇ Banner at Registration & Luncheon
- ◇ Speaking Opportunity at Event
- ◇ Display /Booth Space Available

Friends of the Foundation

- ◇ Any donation no matter how big or small  
(including swag, giveaway items, baskets for  
raffle)

**Sponsorship Notes:**

- ◇ Each sponsorship level comes with name listed in  
the event program
- ◇ Please contact us for other creative sponsorship  
options

Golfer #1: \_\_\_\_\_

Fees:

- Foursome only- \$480
- Lunch Only!. No golf—\$20

Golfer #2: \_\_\_\_\_

Sponsorship:

Golfer #3: \_\_\_\_\_

- Platinum - \$1500
- Gold - \$1100
- Silver - \$525
- Bronze - \$100
- Hot Dog Cart Sponsor—\$150
- Beverage Sponsor - \$200
- Lunch Sponsor - \$500
- Cart Sponsor - \$500
- Overall Event Sponsor - \$2000
- Friends of the Foundation

Golfer #4: \_\_\_\_\_

Reservations will be taken on a  
first-come, first-served basis.

Payment will ensure your position for  
the scramble. Confirmation will be  
sent upon arrival of payment.

Should the event be cancelled due to  
inclement weather, there will NOT be  
a rain date and all fees will be  
considered a donation. However,  
cancellation is unlikely.

If you require further information  
please call Kris Mill at 610-703-8912 or  
Herb Frye at 610-751-0206 or email at  
MLFMemorialFoundation@gmail.com